



Intercultural Relations (ICR)



FFSC Naples
Facebook

Diana Di Rocco & Nunzia Arpante

diana.diroccoowens2.In@us.navy.mil
annunziata.arpante.In@us.navy.mil

*Diana Di Rocco
Nunzia Arpante
FFSC, Feb 2024*

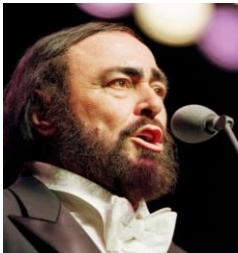


Area Orientation Field Trip Info

- ***Muster at the Support Site bus stop C by the fire station @ 07:45 a.m.***
- ***The cost of public transportation and meals during the ICR field trip is at the attendee's expense; at least 20 Euros per participant is recommended.***
- ***The ICR field trip attendees should be able to participate in a rigorous uphill walk.***
- ***No children under 13 years of age are permitted on the trip.***
- ***The FFSC will organize a separate family trip to accommodate our younger clients.***
- ***Casual attire, comfortable shoes, and a water bottle are highly recommended. Antiterrorism measures will be observed at all times.***
- ***For trip purposes, please add numbers to your cell phone.***
+39 335 778 7393 (Ms. Nunzia) +39 335 741 8277 (Ms. Diana)



ITALIA / ITALY





Facts of Italy



ITALIA

EUROPE



Facts of Italy:

- It is the third-largest national economy in the European Union and the 10th-largest globally.
- Italy is the world's largest wine producer and manufacturer of high-quality products, including automobiles, ships, home appliances, and clothing designers.
- Italy is the largest hub for luxury goods in Europe.

Population: 60 million
Kingdom of Italy: 17 March 1861
Italian Republic: 2 June 1946
Rome Capital of Italy: 1870



Sergio Mattarella, President of Italy



Papa Francesco





Euro Currency



- *Since 2002*





Visit Italy

- *Italy holds the record for the most UNESCO heritage sites in the world.*
- *There are 58 UNESCO sites in Italy—53 cultural and five natural—and many others are under consideration.*

Costiera Amalfitana / Amalfi Coast



Venezia / Venice





Cities of Art



ROMA / ROME

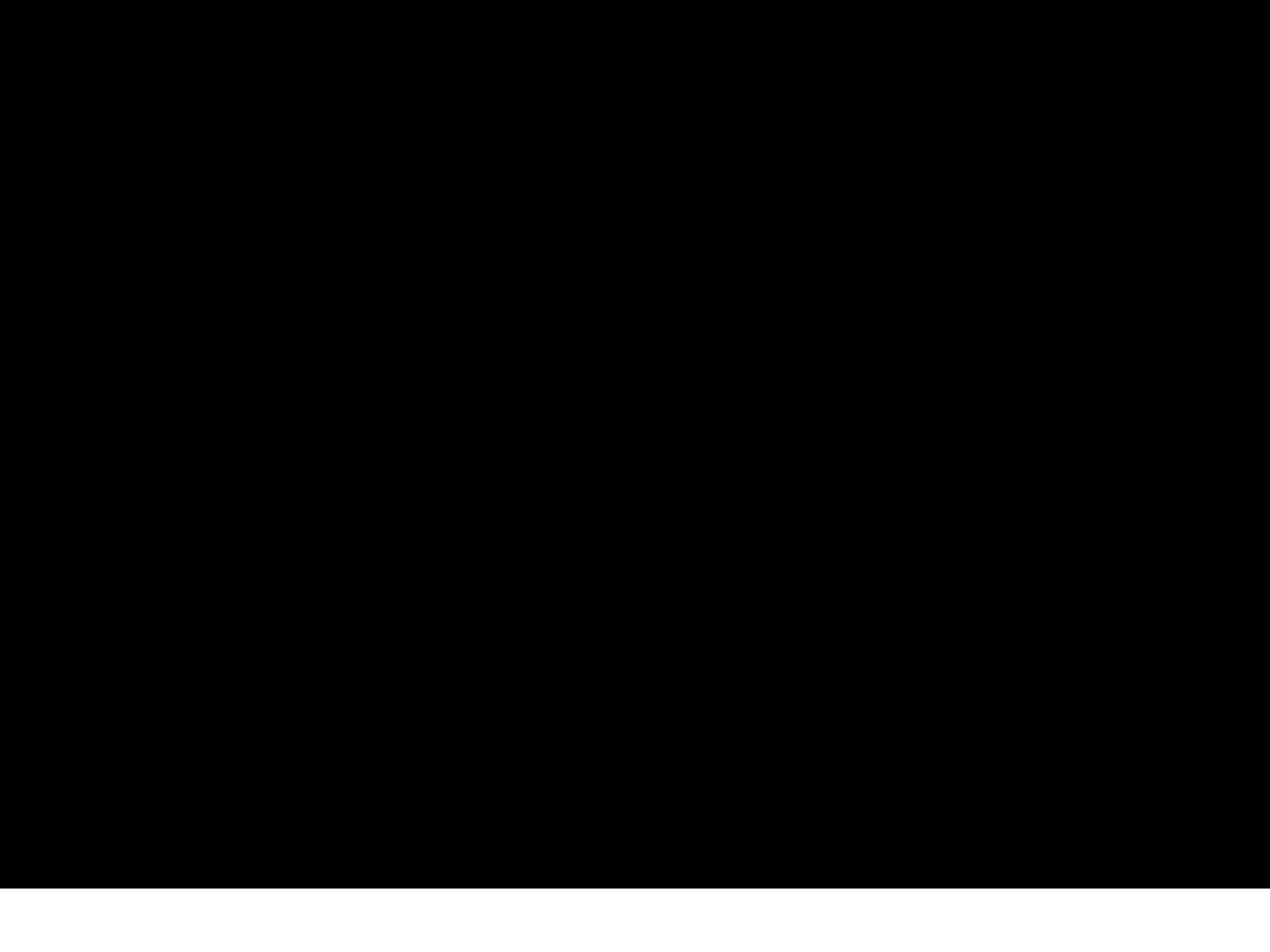


FIRENZE / FLORENCE



MILANO / MILAN







Napoli / Naples

Castel Dell'Ovo



San Carlo Theater



Castel Nuovo



Galleria Umberto I





Caserta Royal Palace





Archeological Sites

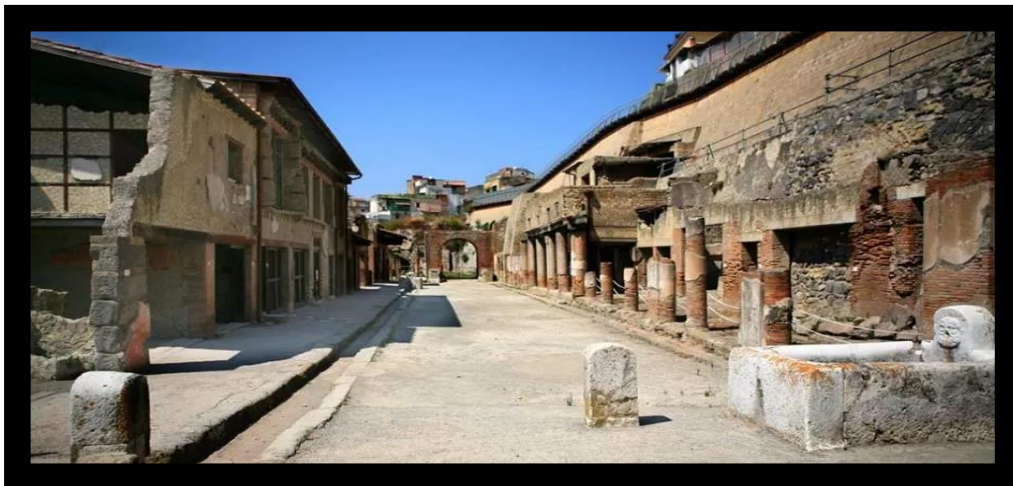
Archeological Museum

Pompei



Ercolano

Vesuvio





Travel in and from Naples

Napoli International Airport (NAP)



CAMPANIA

Afragola Train Station



**Trenitalia
APP**





Local Transportation

Transportation



- Autobus (buses)
- Metropolitana (subway)
- Funicolare/i (cable cars)
- Treni (trains)





Metro Linea 1 Toledo Station



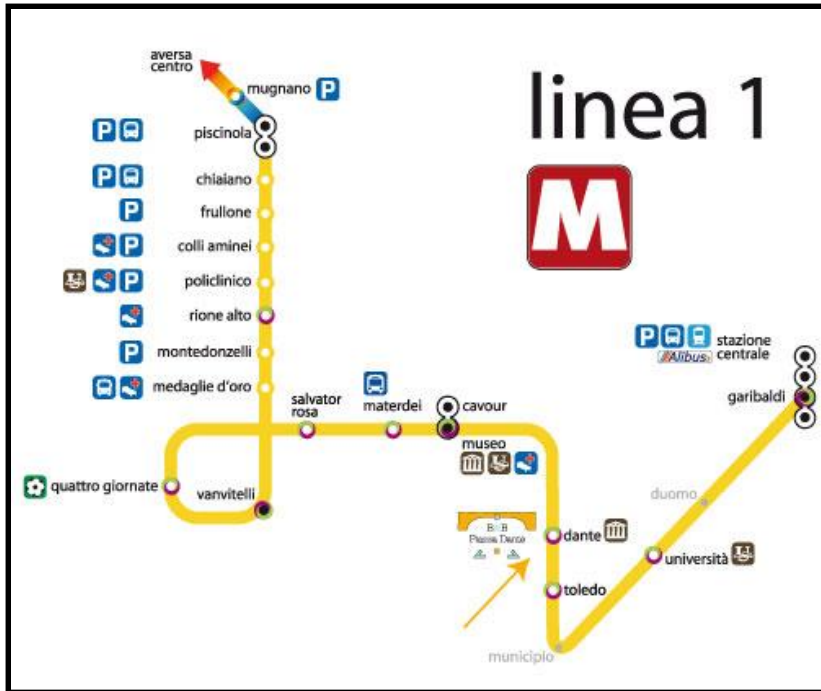


Metro and Buses

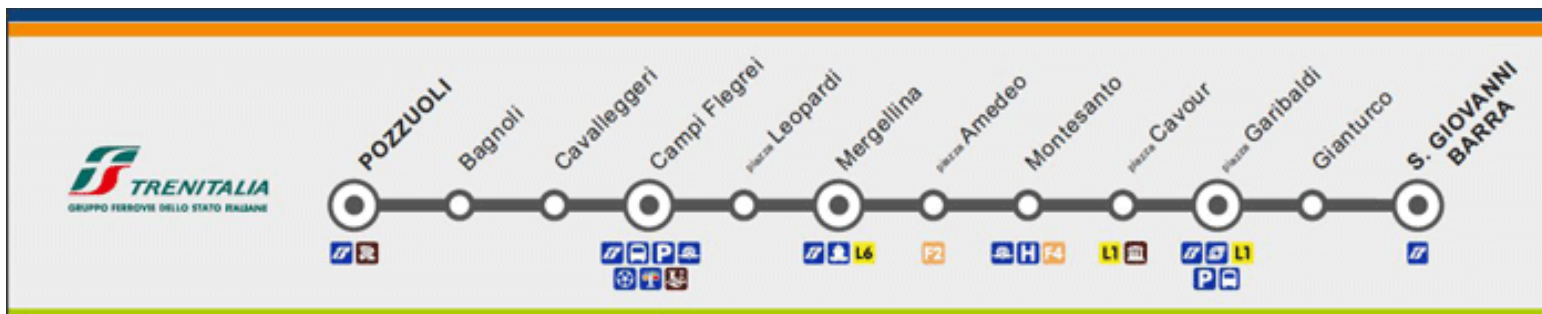
AUTOBUS / BUSES



www.anm.it



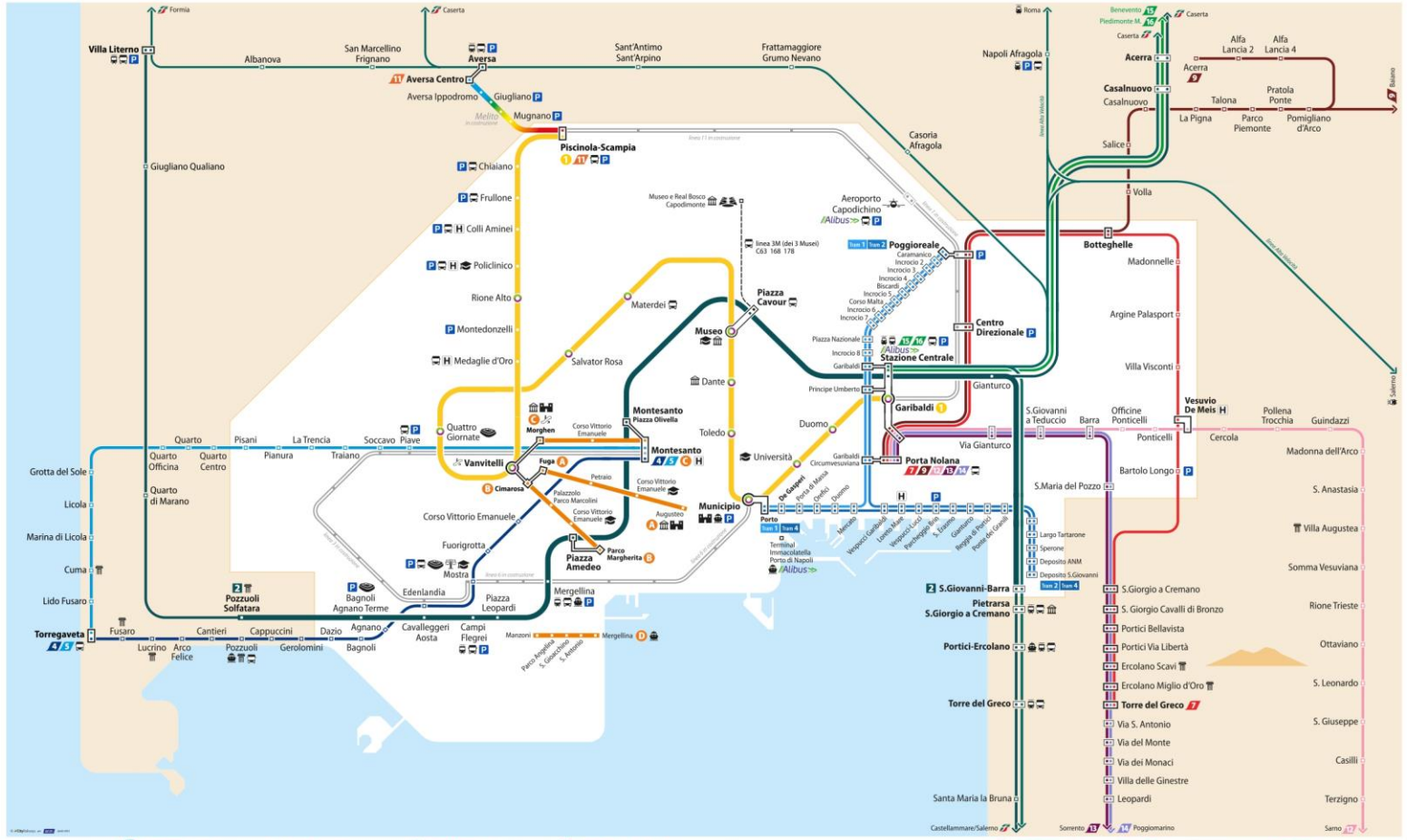
Linea 2





Mapa della rete integrata di metropolitane e linee regionali della città di Napoli

Rapid transit map of Naples



legenda

<p>linee metropolitane</p> <ul style="list-style-type: none"> Linea 1: Piscina S. Gaetano - Capodichino Linea 2: Capodichino - Capodichino Linea 3: Capodichino - Capodichino Linea 4: Capodichino - Capodichino Linea 5: Capodichino - Capodichino Linea 6: Capodichino - Capodichino Linea 7: Capodichino - Capodichino Linea 8: Capodichino - Capodichino Linea 9: Capodichino - Capodichino Linea 10: Capodichino - Capodichino Linea 11: Capodichino - Capodichino Linea 12: Capodichino - Capodichino Linea 13: Capodichino - Capodichino Linea 14: Capodichino - Capodichino Linea 15: Capodichino - Capodichino Linea 16: Capodichino - Capodichino Linea 17: Capodichino - Capodichino Linea 18: Capodichino - Capodichino Linea 19: Capodichino - Capodichino Linea 20: Capodichino - Capodichino 	<p>linee funicolari</p> <ul style="list-style-type: none"> Caserta - Fuja Aqueduct Caserta - Parco Margherita Caserta - S. Maria Margherita Caserta - S. Maria Margherita Caserta - S. Maria Margherita Caserta - S. Maria Margherita Caserta - S. Maria Margherita Caserta - S. Maria Margherita Caserta - S. Maria Margherita Caserta - S. Maria Margherita Caserta - S. Maria Margherita Caserta - S. Maria Margherita Caserta - S. Maria Margherita Caserta - S. Maria Margherita Caserta - S. Maria Margherita Caserta - S. Maria Margherita Caserta - S. Maria Margherita Caserta - S. Maria Margherita Caserta - S. Maria Margherita Caserta - S. Maria Margherita 	<p>linee tramviarie</p> <ul style="list-style-type: none"> Prograno - Giardini Porto Prograno - Giardini Porto Prograno - Giardini Porto Prograno - Giardini Porto Prograno - Giardini Porto Prograno - Giardini Porto Prograno - Giardini Porto Prograno - Giardini Porto Prograno - Giardini Porto Prograno - Giardini Porto Prograno - Giardini Porto Prograno - Giardini Porto Prograno - Giardini Porto Prograno - Giardini Porto Prograno - Giardini Porto Prograno - Giardini Porto Prograno - Giardini Porto Prograno - Giardini Porto Prograno - Giardini Porto Prograno - Giardini Porto 	<p>ferrovie extraurbane</p> <ul style="list-style-type: none"> Linea Prograno Linea Prograno Linea Prograno Linea Prograno Linea Prograno Linea Prograno Linea Prograno Linea Prograno Linea Prograno Linea Prograno Linea Prograno Linea Prograno Linea Prograno Linea Prograno Linea Prograno Linea Prograno Linea Prograno Linea Prograno Linea Prograno Linea Prograno 	<p>ferrovie regionali</p> <ul style="list-style-type: none"> Linea Prograno Linea Prograno Linea Prograno Linea Prograno Linea Prograno Linea Prograno Linea Prograno Linea Prograno Linea Prograno Linea Prograno Linea Prograno Linea Prograno Linea Prograno Linea Prograno Linea Prograno Linea Prograno Linea Prograno Linea Prograno Linea Prograno Linea Prograno 	<p>altri simboli</p> <ul style="list-style-type: none"> Stazione Stazione Stazione Stazione Stazione Stazione Stazione Stazione Stazione Stazione Stazione Stazione Stazione Stazione Stazione Stazione Stazione Stazione Stazione Stazione 	<p>pittogrammi</p> <ul style="list-style-type: none"> Stazione Stazione Stazione Stazione Stazione Stazione Stazione Stazione Stazione Stazione Stazione Stazione Stazione Stazione Stazione Stazione Stazione Stazione Stazione Stazione
--------------------------------------------------------------------------------------------------------------------------------------------------------------------------------------------------------------------------------------------------------------------------------------------------------------------------------------------------------------------------------------------------------------------------------------------------------------------------------------------------------------------------------------------------------------------------------------------------------------------------------------------------------------------------------------------------------------------------------------------------------------------------------------------------------------------------------------------------------------------------------------------------------------------------------------------------------------------------------------------------------------	----------------------------------------------------------------------------------------------------------------------------------------------------------------------------------------------------------------------------------------------------------------------------------------------------------------------------------------------------------------------------------------------------------------------------------------------------------------------------------------------------------------------------------------------------------------------------------------------------------------------------------------------------------------------------------------------------------------------------------------------------------------------------------------------------------------------------------------------------------------------------	-----------------------------------------------------------------------------------------------------------------------------------------------------------------------------------------------------------------------------------------------------------------------------------------------------------------------------------------------------------------------------------------------------------------------------------------------------------------------------------------------------------------------------------------------------------------------------------------------------------------------------------------------------------------------------------------------------------------------------------------------------------------------------------------------------	-----------------------------------------------------------------------------------------------------------------------------------------------------------------------------------------------------------------------------------------------------------------------------------------------------------------------------------------------------------------------------------------------------------------------------------------------------------------------------------------------------------------------------------------------------------------------------	---------------------------------------------------------------------------------------------------------------------------------------------------------------------------------------------------------------------------------------------------------------------------------------------------------------------------------------------------------------------------------------------------------------------------------------------------------------------------------------------------------------------------------------------------------------------------	----------------------------------------------------------------------------------------------------------------------------------------------------------------------------------------------------------------------------------------------------------------------------------------------------------------------------------------------------------------------------------------------------------------------------------------------	--------------------------------------------------------------------------------------------------------------------------------------------------------------------------------------------------------------------------------------------------------------------------------------------------------------------------------------------------------------------------------------------------------------------------------------------



Shuttle bus to/from airport

Alibus
airport shuttle bus

Aeroporto
Airport

Stazione Centrale
Central railway station

Porto
Port

anm



CONVALIDA
STAMP HERE

Aeroporto
Airport

Stazione Centrale
Central railway station

Porto
Port

90 MINUTI €5,00

anm
CONSORZIO UNICOCAMPANIA

ALIBUS
From Capodichino Airport to:
Central Station (Napoli Centrale)
Port of Naples (Porto di Napoli)

Hours: 0530-2355

UNICO
CAMPANIA



Napoli Tickets (biglietti) (only within the city)

**Alibus
5,00 Euro**



**Single
Ride
1,30
Euro**



**Integrato 90
minutes
1,80 Euro**



**Daily Ticket
5,40 Euro**



Monthly Pass: 35 euro (anm only); 42 euro (all companies)



azienda
napoletana
mobilità s.p.a.



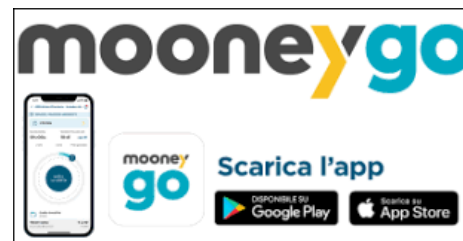
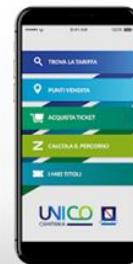


Buying Tickets



ALWAYS
VALIDATE
YOUR TICKET!

KEEP YOUR
TICKET UNTIL
OFF THE
STATION





Catch a train



www.trenitalia.it



www.italotreno.it

From Napoli Centrale (Garibaldi) or Afragola



Regionale-InterCity, from Napoli or Aversa



Parking / Parcheggio



RISPARMIA CON Tap&Park
SCARICA l'app ANM

PAGA LA SOSTA SOLO QUANDO TI SERVE
DIRETTAMENTE DALLO SMARTPHONE
SENZA COSTI AGGIUNTIVI
CON LA POSSIBILITÀ DI PROLUNGARE
LA SOSTA DIRETTAMENTE DAL POSTO
IN CUI TI TROVI!

Scarica Tap&Park su
Google Play
App Store

Info@atitrasporti.com.it
www.tapandpark.com

www.anm.it



WHITE: FREE
BLUE: PAY
YELLOW: RESERVED



Food and Café etiquette in Italy





Andiamo al Bar



**Bar or Caffeteria
For breakfast (colazione)
or any time of the day**





Ordiniamo il caffè





Al banco





Al tavolo



**Extra fee to sit at a table
The waiter will take your order**



Let's order (Ordiniamo)



First get your receipt, (scontrino) from the register.
Then, show the scontrino to the barista while asking for your order.
Wait at the counter to be served.

PRACTICE:

Vorrei un caffè, per favore (I would like a café, please).

Vorrei una sfogliatella, per favore (I would like a sfogliatella, please).



Types of Cafés

Caffè Espresso



Caffè Macchiato



Caffè Corretto



Caffè del nonno



Cappuccino



Note: Cappuccino in Italy is only one size, no large or small.



Along with your caffè



Sfogliatella Riccia



Sfogliatella Frolla



Cornetto



Babbà



Graffa



Lunch / Dinner



Ristorante

Kitchen hours:

Lunch: 1200/1230 to 1500/1530

Dinner: 1900-1930 to 2300

Lunch time: 1300-1400

Dinner time: 1930-2030





Il conto (the bill)

- When you are ready to leave the restaurant, ask the waiter for the bill, (il conto). Nobody will bring the bill until you ask for it.
- If the 'Servizio' is not already included, you may leave a tip, (MANCIA). Best if in cash, not common to add tip on credit card.

Italian eating facilities:

- **Ristorante:** Restaurant
- **Trattoria:** Local food, family run
- **Pizzeria:** Only for pizza
- **Tavola Calda:** Self-service, cafeteria style
- **Rosticceria:** Rotisserie, fried food, take away

Cella identificativa del Cliente

QUANT.	DESCRIZIONE	IMPORTI
	COPERTI	
	VINO - BIRRA	
	ACQUA MINERALE	
	PIZZA	
	ANTIPASTI	
	PRIMI PIATTI	
	SECONDI PIATTI	
	CONTORNI	
	FORMAGGI	
	FRUTTA	
	DOLCI - DESSERT	
	CAFFE' - LIQUORI	
	MENÙ A PREZZO FISSO	
	Arrenderci e Grazie	
CONTO		
	Servizio _____ %	
	Contospettivo pagato	
	Contospettivo non pagato	
n.		
data		
	TOTALE €	

Coperto

Servizio

Total



Cultural Awareness



**Culture Shock =
Stress, frustration, disorientation**

- **INCUBATION STAGE (Honeymoon):** Everything is new and exciting!
- **SECOND STAGE:** (2 to 4 months from arrival) **CULTURE SHOCK!** Difficult times and crises in daily life.
- **THIRD STAGE:** Gaining understanding of the new culture. A feeling of pleasure and/or sense of humor may be experienced.
- **FOURTH STAGE:** Adaption and appreciation. This integration is accompanied by a stronger feeling of belonging.





Cultural Awareness

- **Tips to overcome Culture Shock**
- **Realize that adjustment takes time**
- **Focus on the positive**
- **Get involved with the local community, make friends**
- **Talk to others about how you feel**
- **Stay in touch with friends and family back home**
- **Go out, explore, attend local festivals and events**





Cultural Insights and Basic Etiquette

- **Visiting:**
 - ***Dinner guests often bring a gift of wine, desserts or flowers (no chrysanthemums).***
 - ***If you are visiting someone just before dinner you will be invited to stay.***
 - ***Italians like to be praised for their cooking, so, don't be shy.***
 - ***Guests are not expected to help to clean up after a meal, unless very familiar with the hosts.***
- **Basic Etiquette:**
 - ***It is common for Italian friends and families to kiss on both cheeks to say “hi” and “bye”, regardless of their gender.***
 - ***Italians dress formal in most of occasions.***
 - ***No shorts or flip flops in formal environments.***
 - ***Punctuality may not be so tight, 10-15 minutes delay is acceptable.***



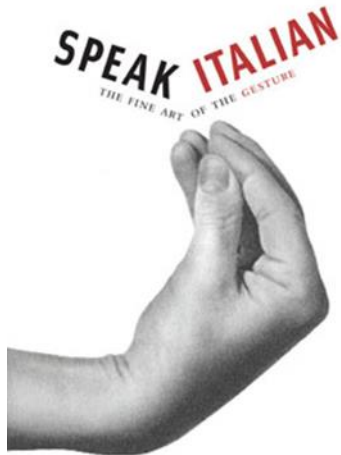
Cultural Insights

- *The Italian culture is commonly associate with Art, Music, Food and Wine.*
- *It is the homeland of the Roman Empire, the Roman Catholic Church and the main center of the Renaissance.*
- *Italian cuisine has influenced food culture around the world and it is viewed as a form of art by many.*
- *For Italians food is not merely nourishment, it is part of their culture. Families gather around tables and food has a primary role.*
- *Family values are taken in great consideration in the Italian culture.*
- *The official language of the country is Italian. Every region has its own dialect, which is only used locally, unofficially.*



Learning about language and culture

- *Italians, especially in Southern Italy, use hand gestures to communicate.*





Don't trust Pete!





Guess the answer



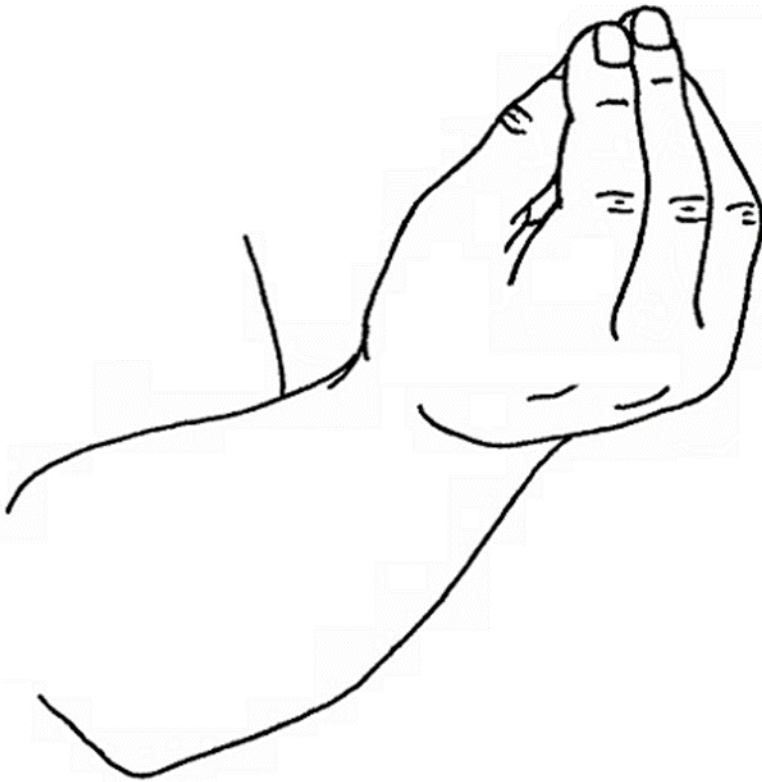
QUIZ TIME

Hand Gestures in Naples





This Hand gesture means:

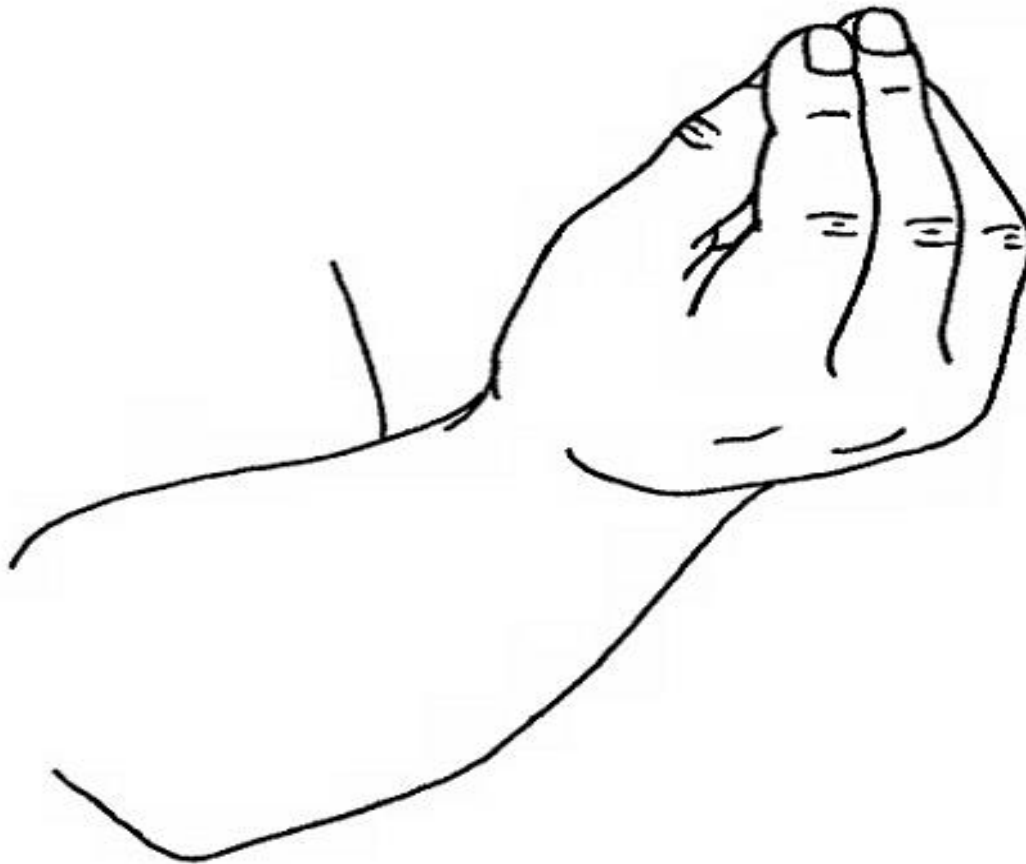


- A. Who, when, where or what**
- B. I don't care!**
- C. Get to the point!**



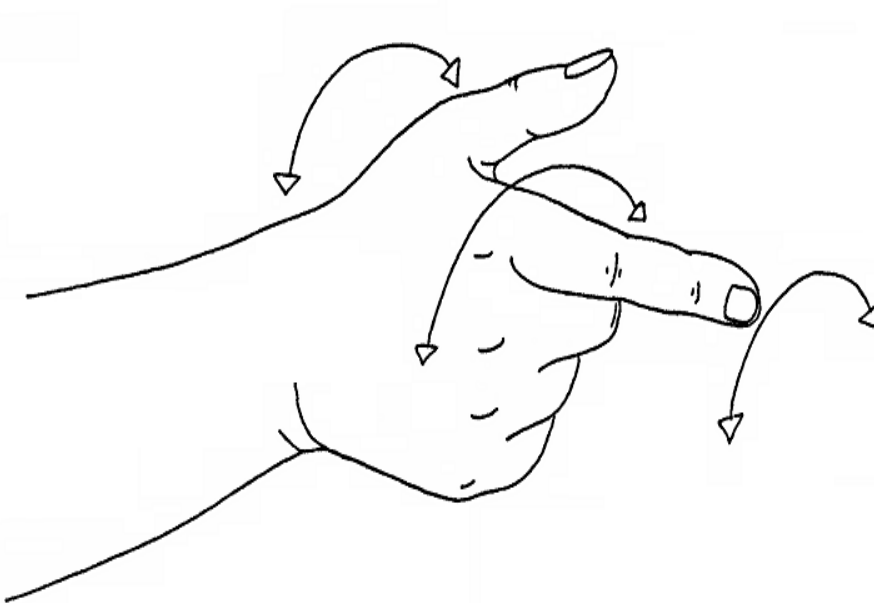
Solution:

Who, when, where, what





This hand gesture means:



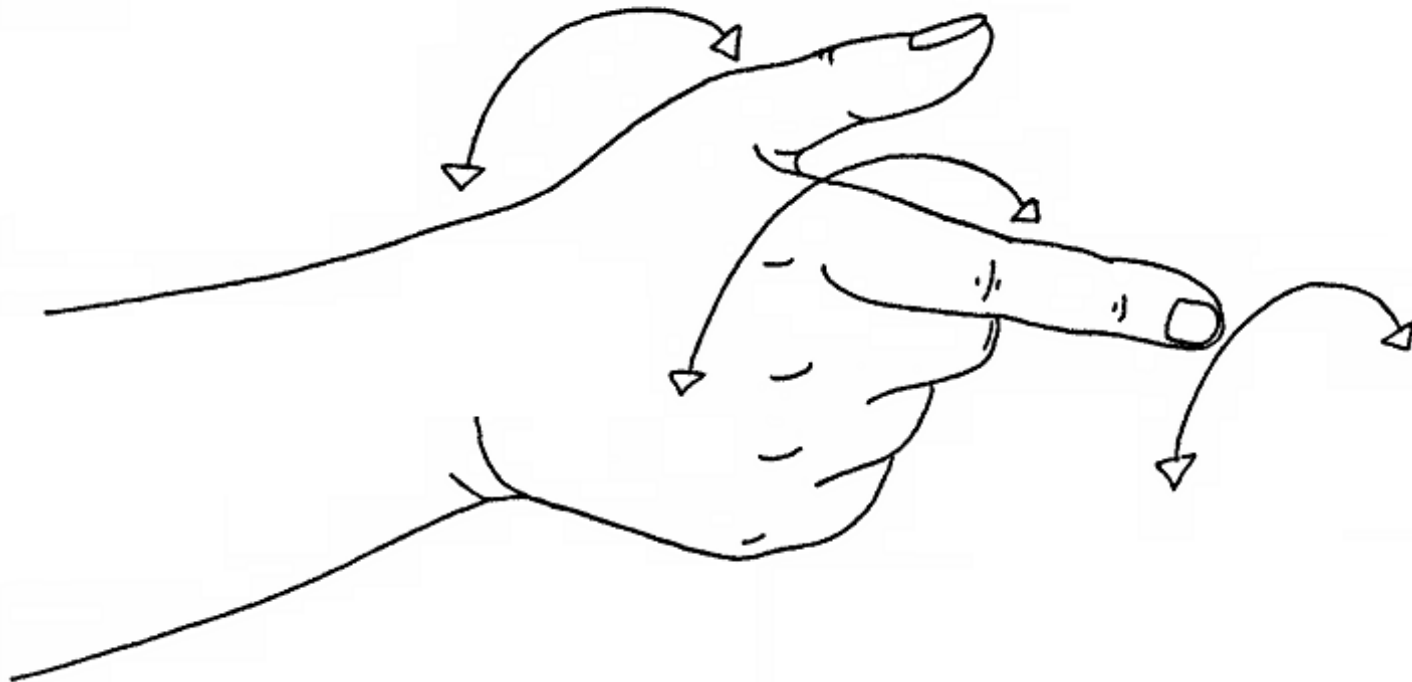
- A. It doesn't work**
- B. No more**
- C. I am broke**
- D. All of the above**



Solution:

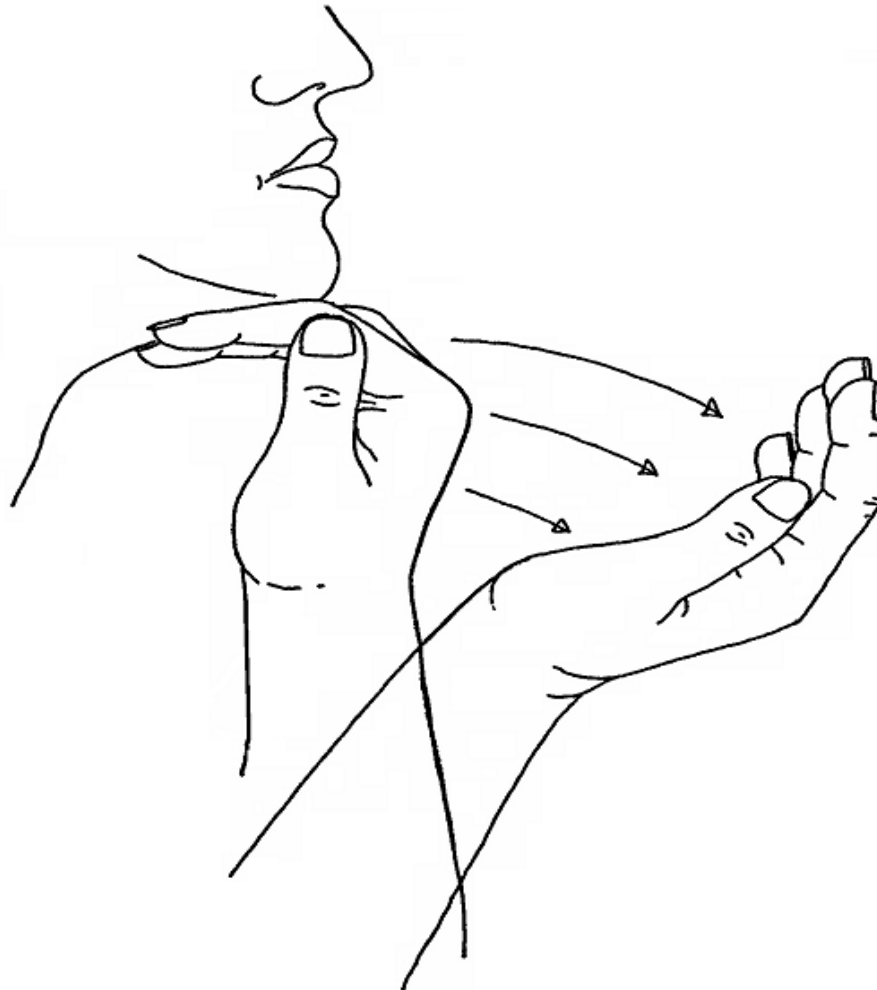


It doesn't work; no more; I am broke!





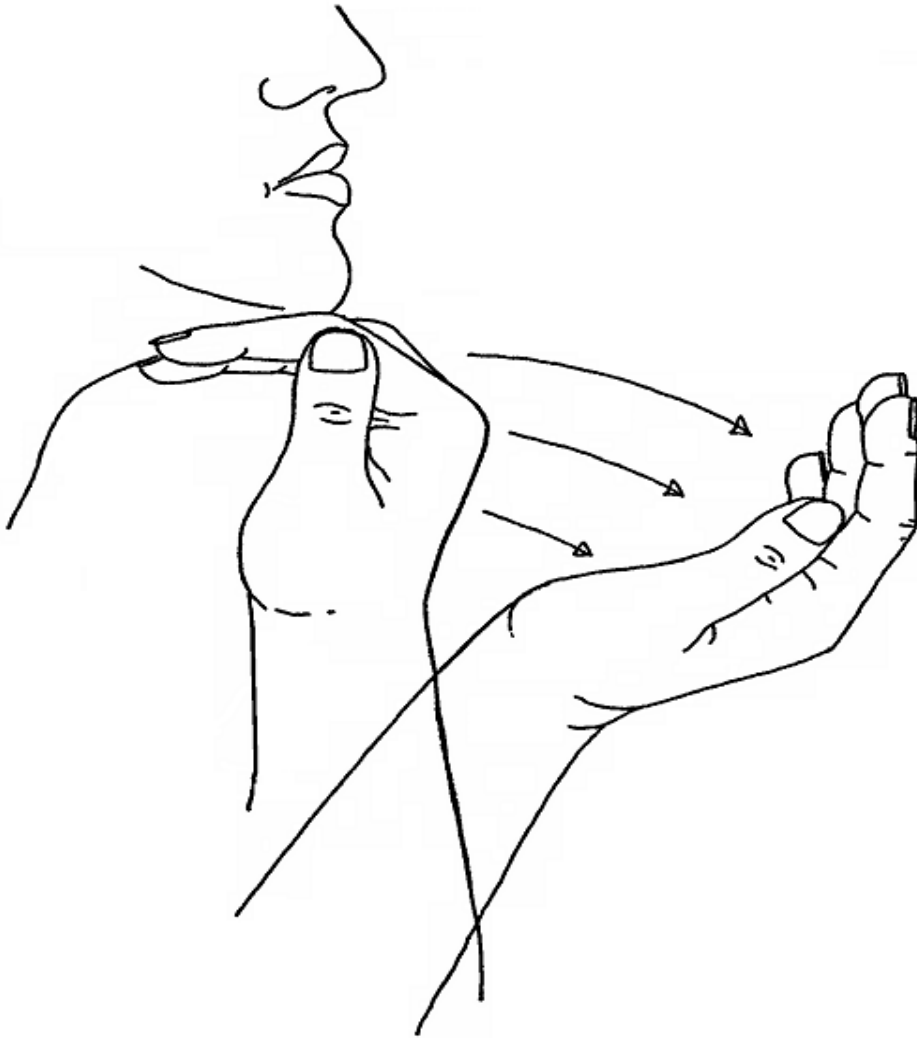
This hand gesture means:



- A. My chin hurts**
- B. I don't care**
- C. Come here**



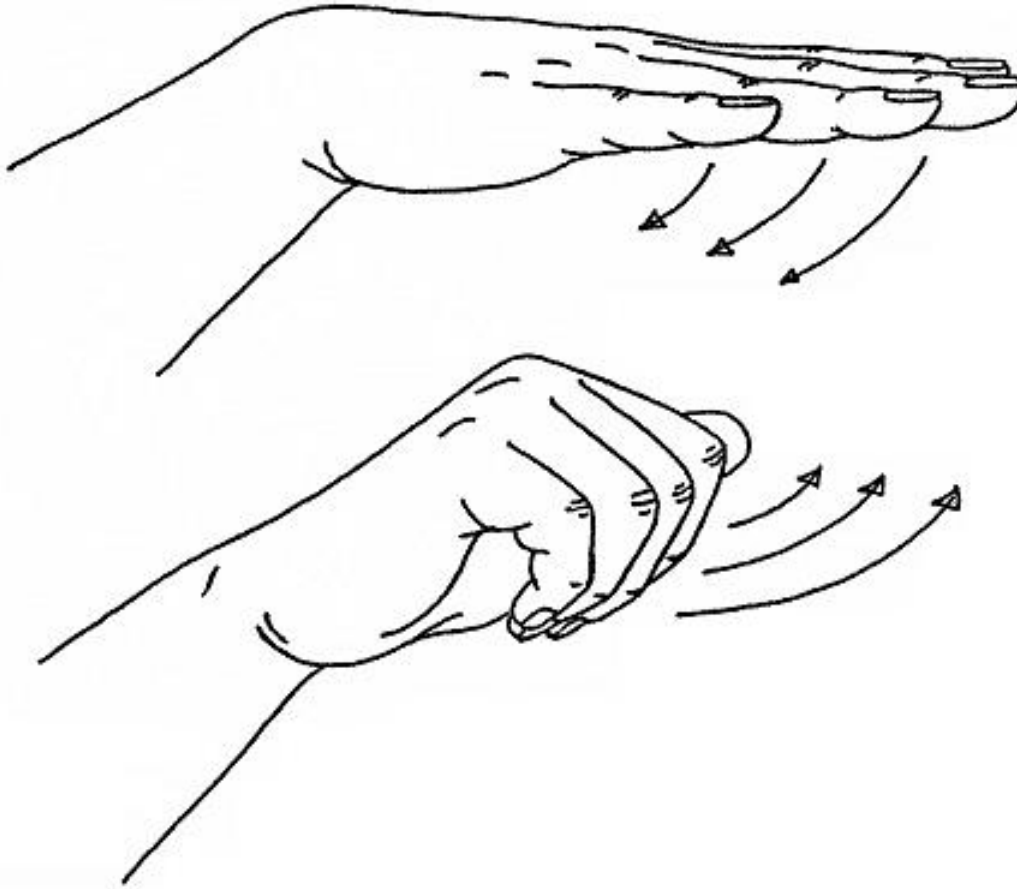
Solution:



I don't care!



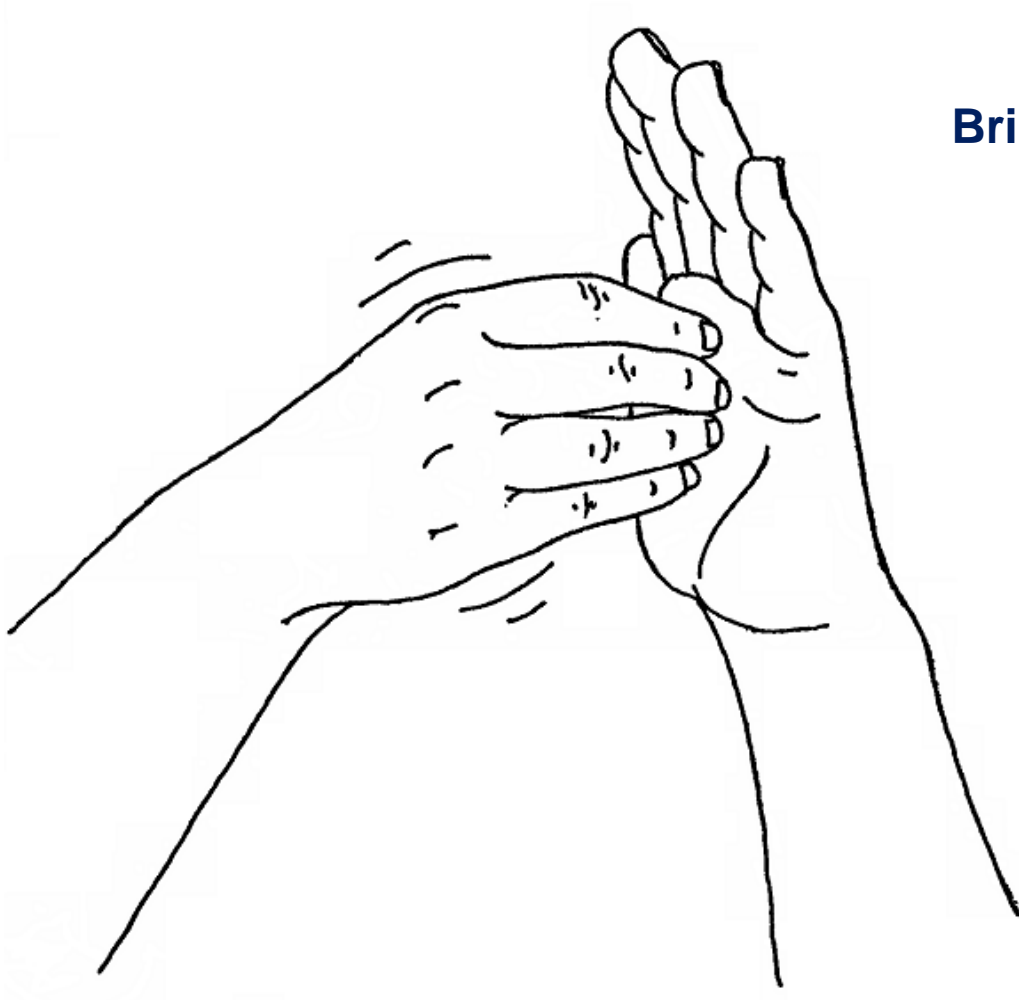
More hand gestures



Come here!



More hand gestures



Bring the check!



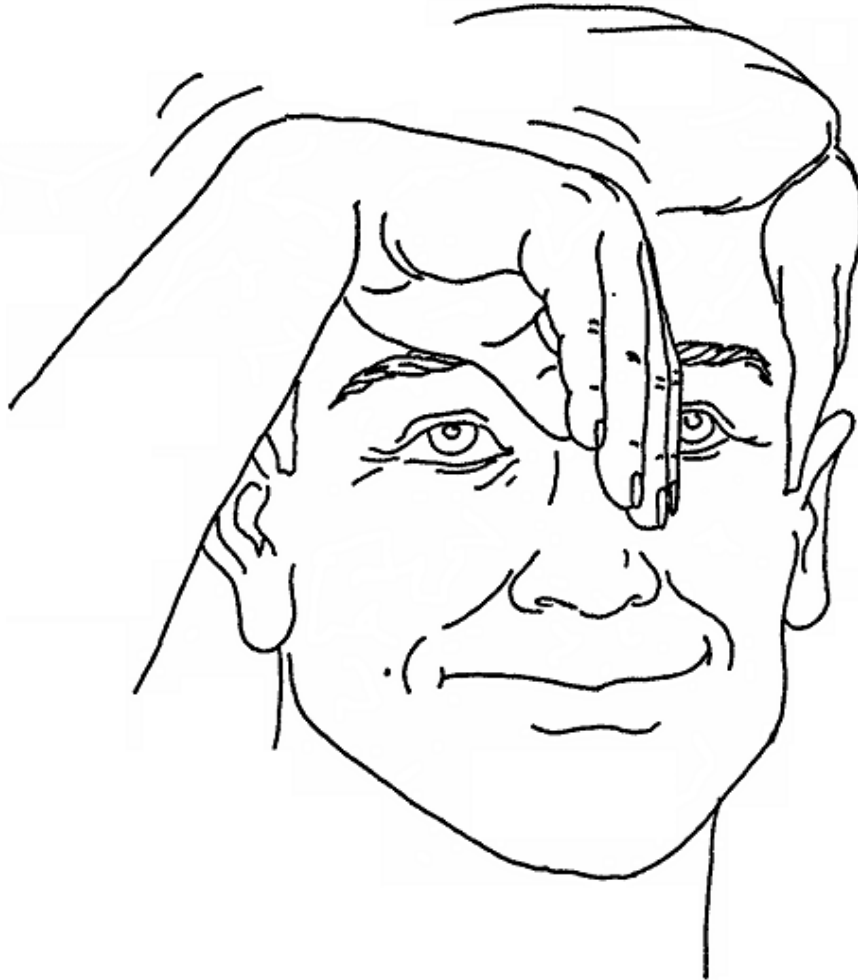
More hand gestures



How much?
Or
Too expensive!



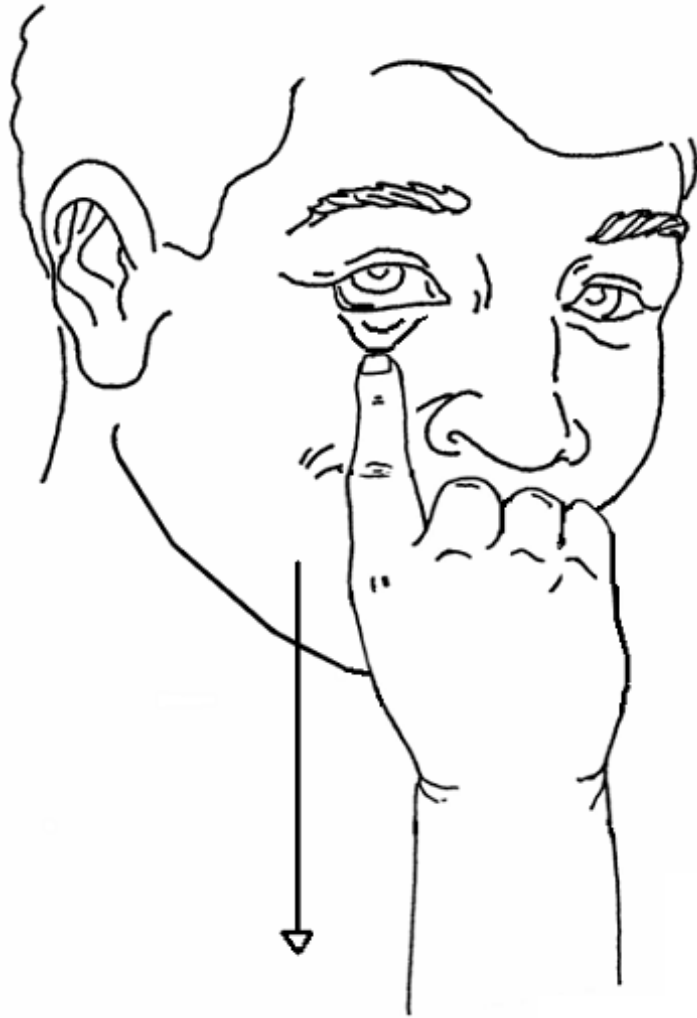
More hand gestures



Blockhead

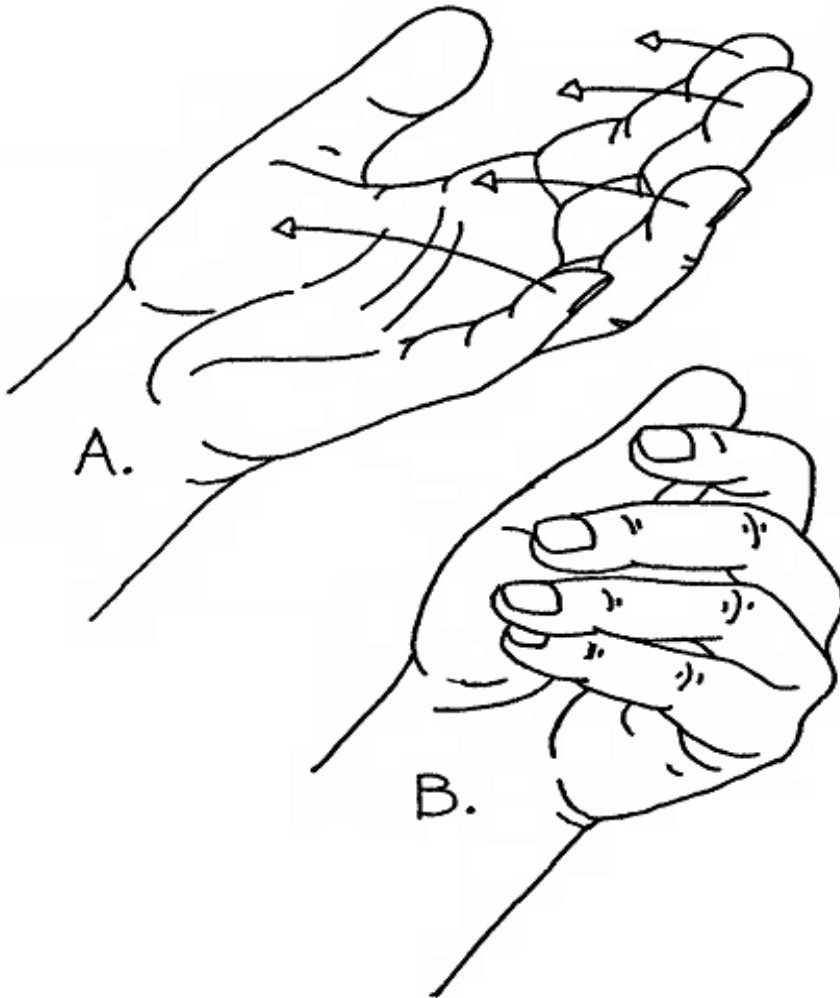


More hand gestures

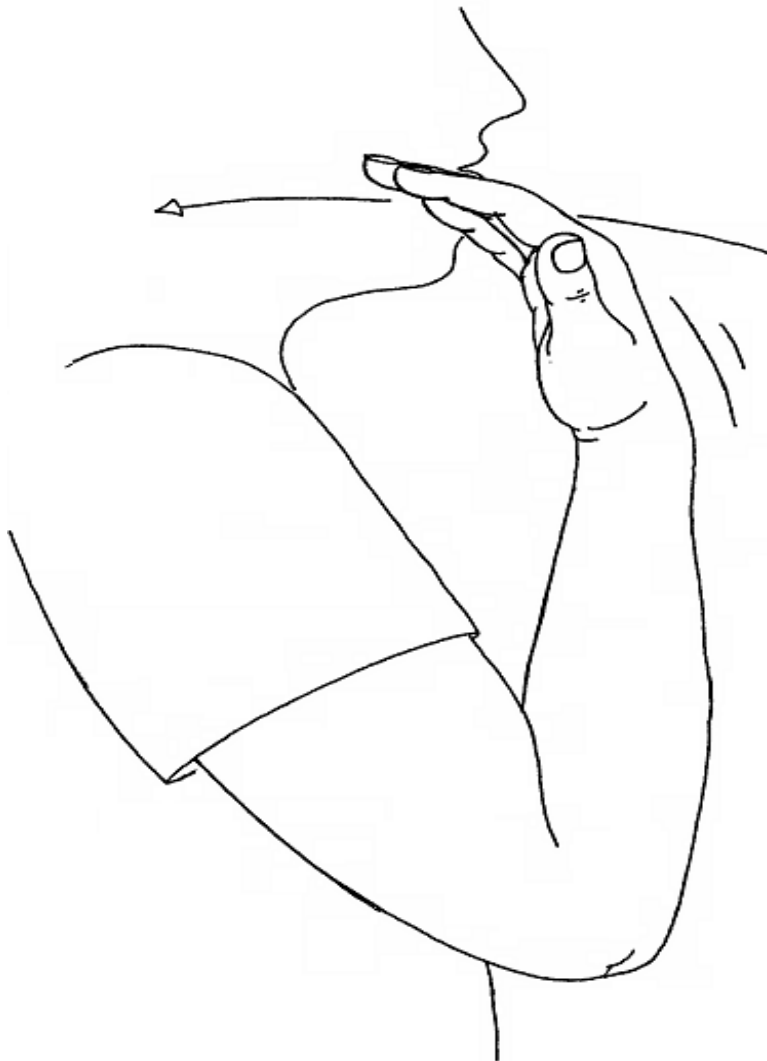


Watch out!

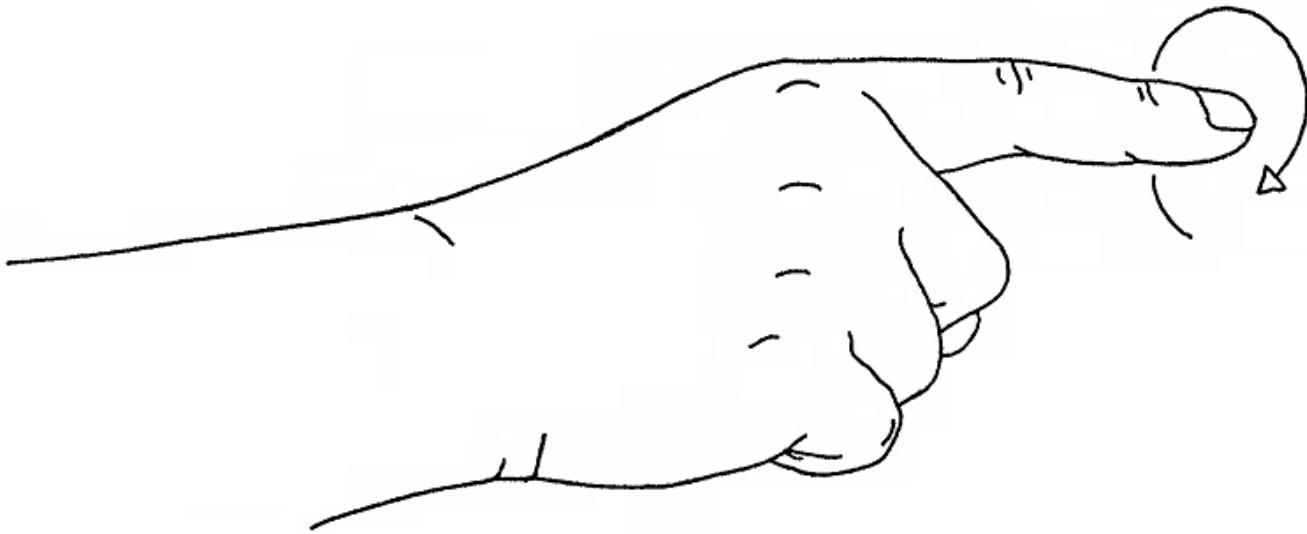
Keep your eyes open!



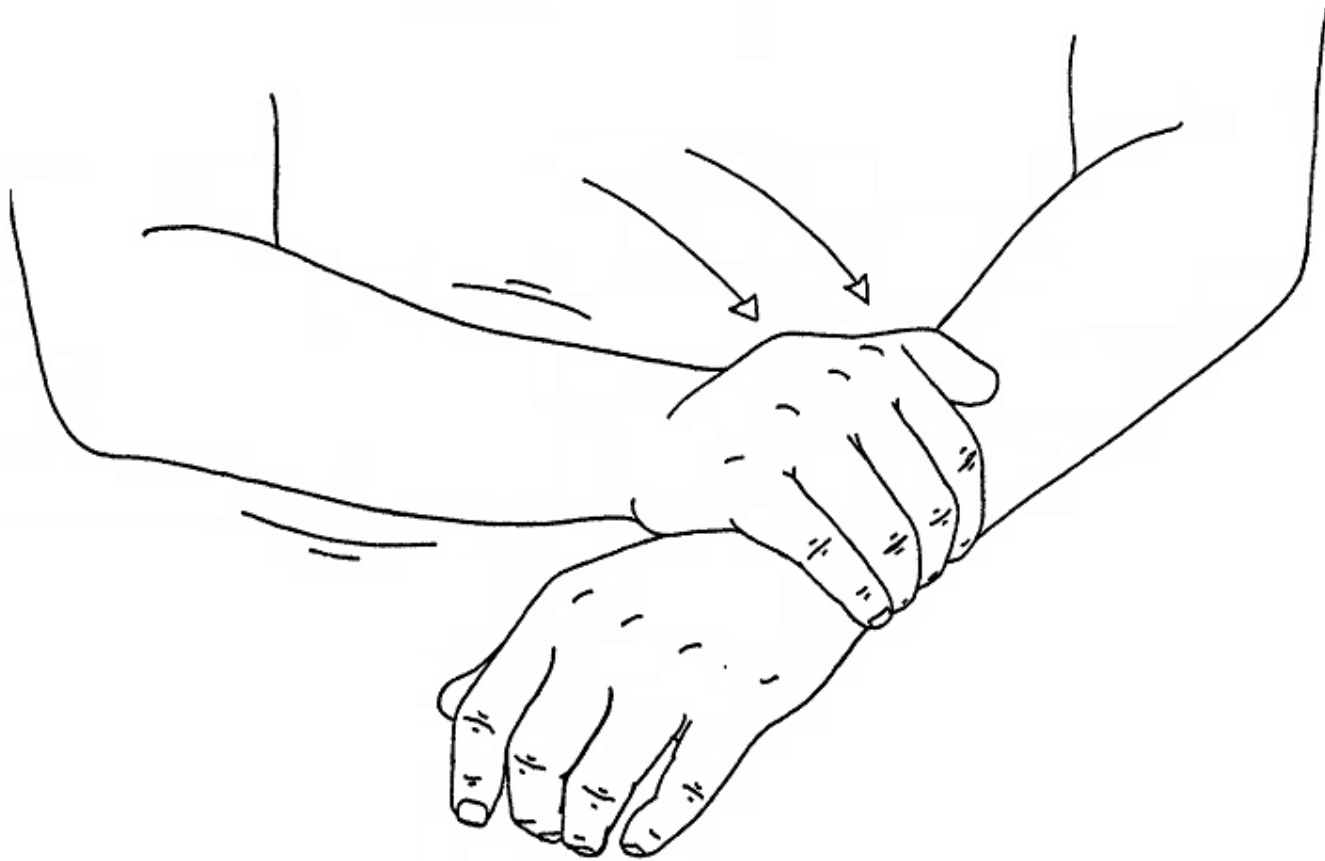
Thief



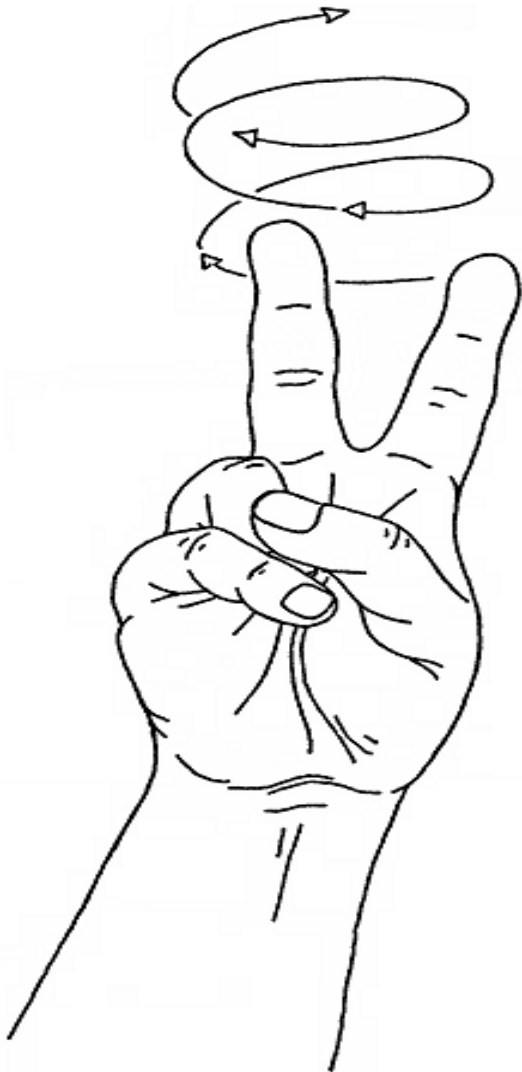
Yesterday, a long time ago.



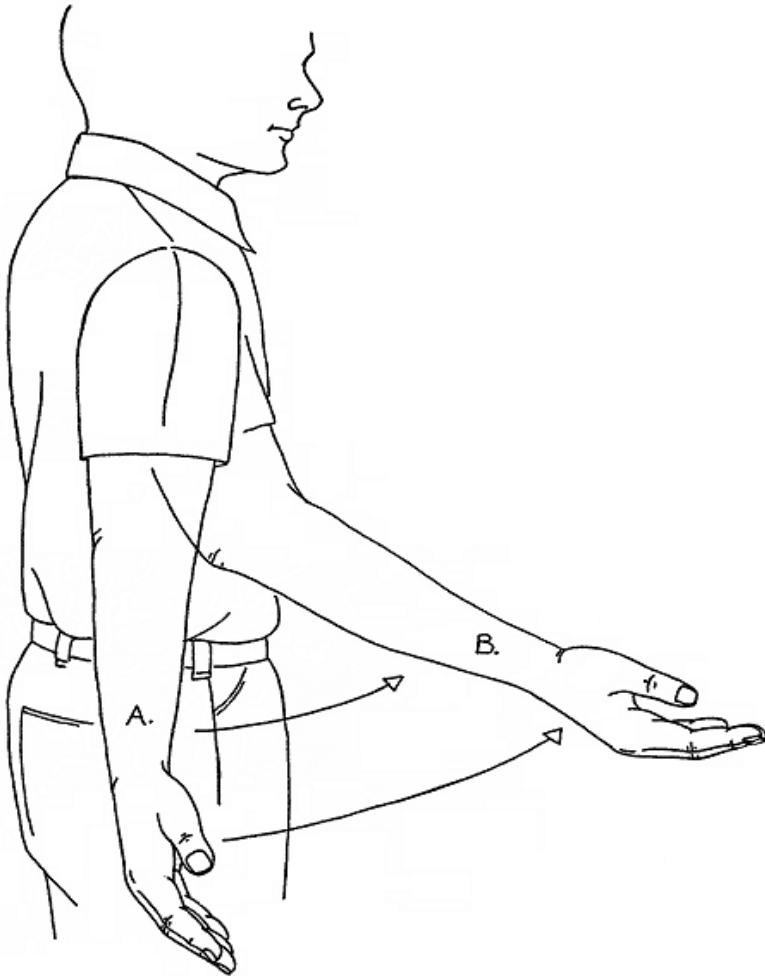
Tomorrow, later



Get out of here or Let's get out of here!



Warning: Dangerous or death



Get lost!



Enjoy Naples, Enjoy Italy, Enjoy Life!





We will see you at the AO trip downtown!





Intercultural Relations (ICR)

*For more information on upcoming cultural activities,
please visit our Facebook page or contact us via email or phone.*



Fleet and Family Support Center
DSN: 629-6372 or Comm: 081-811-6372
NSANaplesFFSC@us.navy.mil



Any Questions?